

The Canvey Island Southern Shoreline Project covers 3.2km of landward embankment, concrete wave wall and riverside concrete maintenance track fronted by a mixed material revetment (predominately Essex blocks), down to the shoreline.

Overview plan showing the location of the proposed works.



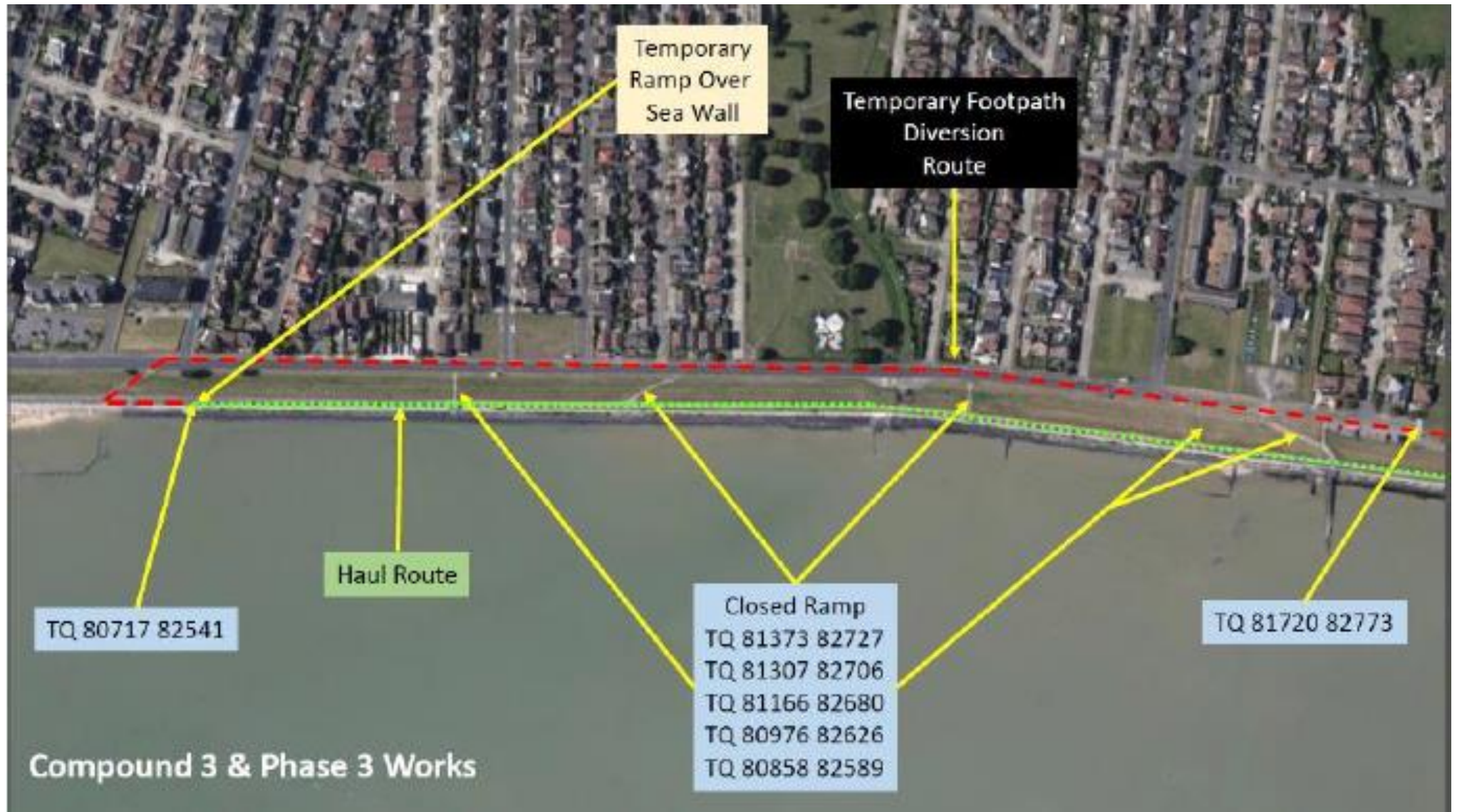
Phase 1 - Footpath Closures and Diversion Routes, and Main Compound



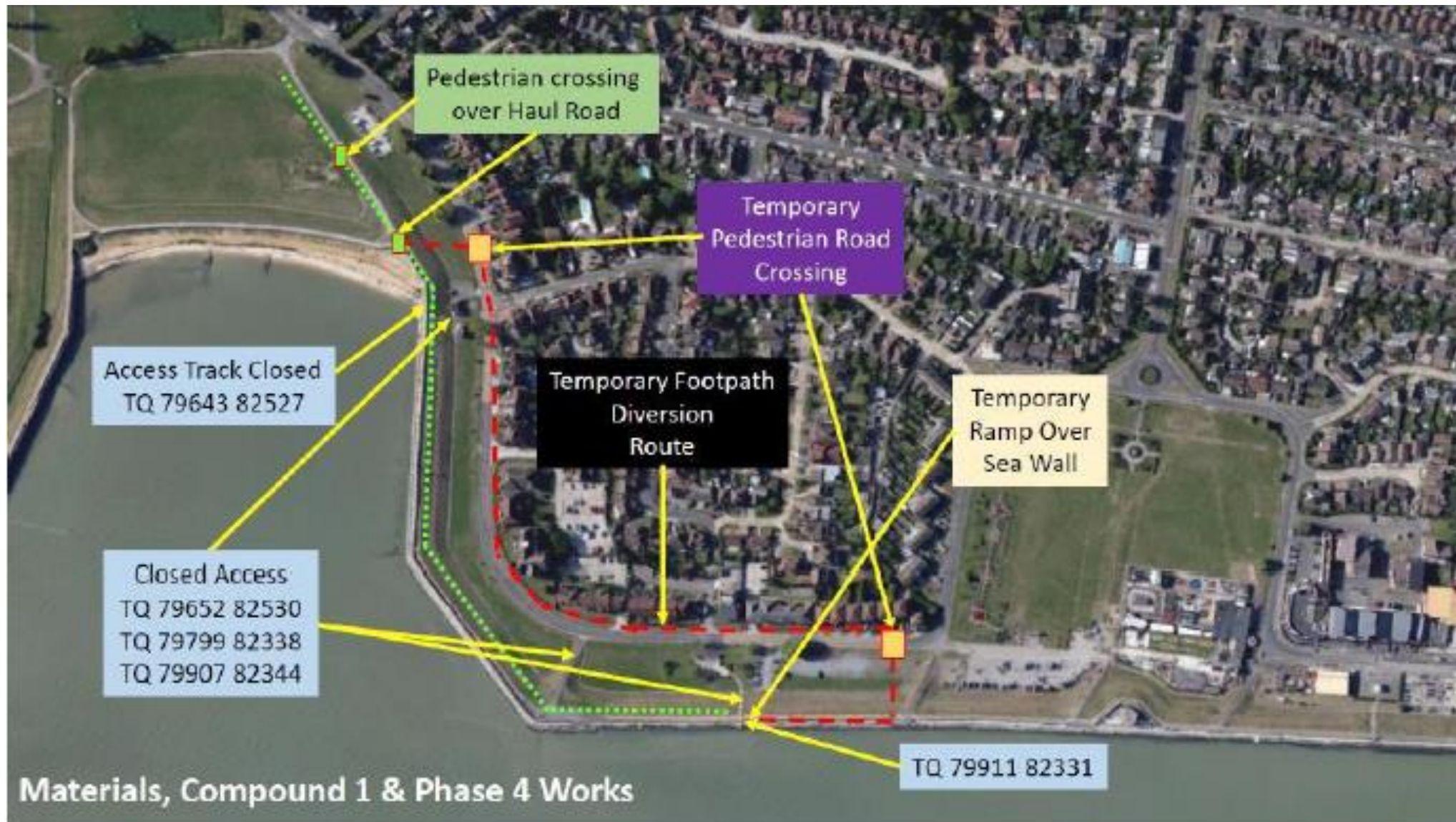
Phase 2 – Footpath Closures and Diversion Routes, and Main Compound



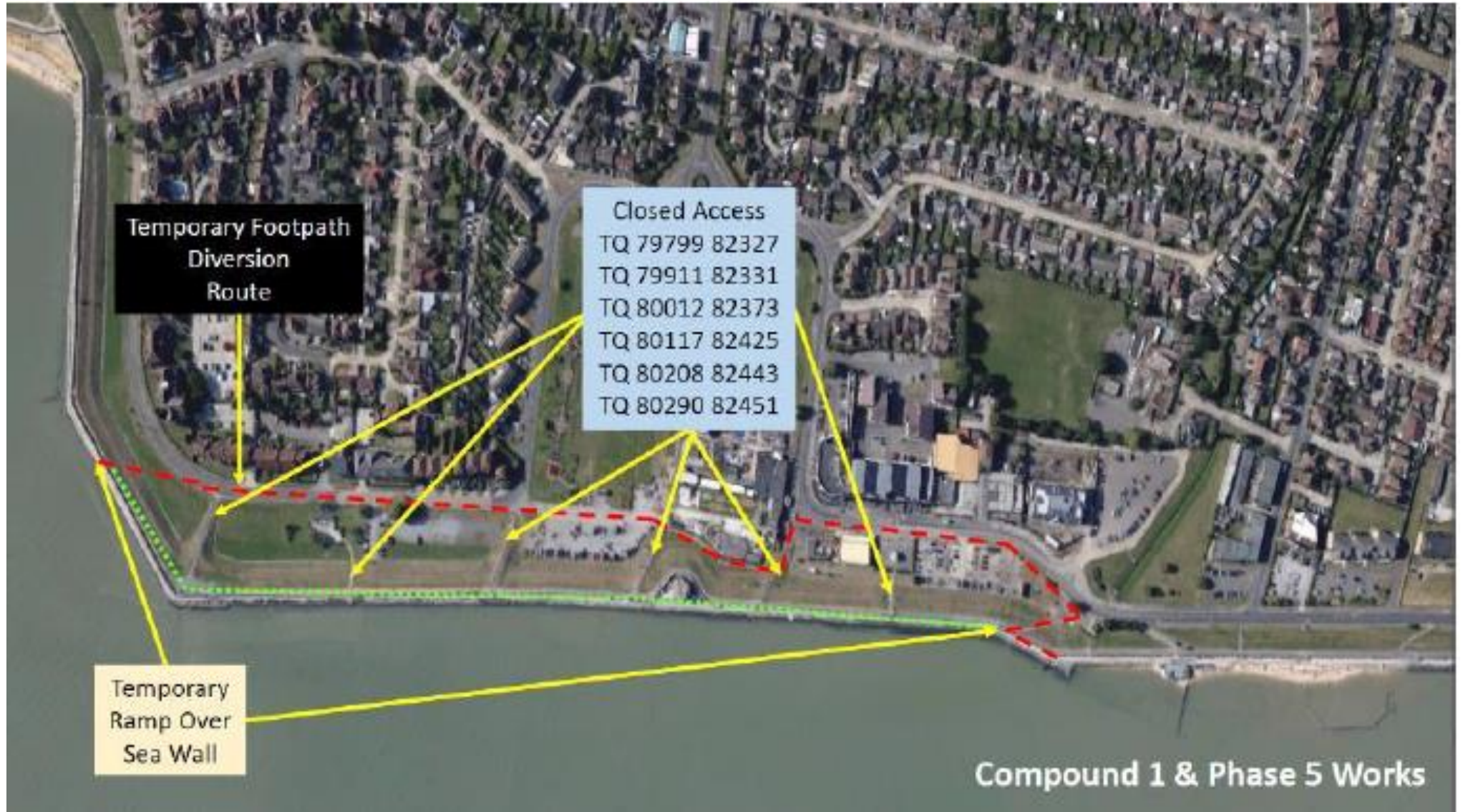
Phase 3 – Footpath Closures and Diversion Routes



Phase 4 – Footpath Closures and Diversion Routes, and Compound 1



Phase 5 – Footpath Closures and Diversion Routes, and Compounds 1-2



Phase 6 – Footpath Closures and Diversion Routes, and Compound 2

